

SAXDOR 320GTC



11.2.2025 Helsinki
(Options valid from 1.6.2025)

SAXDOR

VACUUM INFUSED HULL - GELCOAT RAL 9010 (WHITE)

Standard



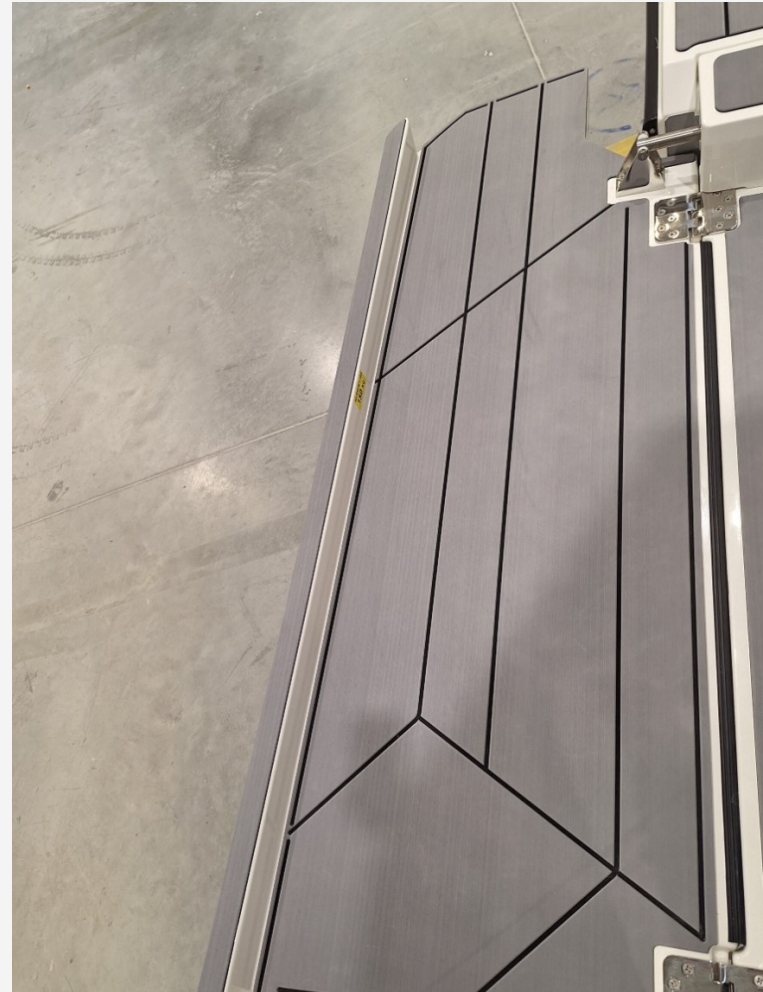
ANTI-SKID FINISHING ON DECKS AND HATCHES

Standard



ELECTRICAL OPENING SIDE TERRACES

Standard



TELESCOPIC BATHING LADDER

Standard



2 X FLUSH MOUNTED HATCHES ON FRONT DECK

Standard



INTEGRATED HANDRAILS ON DECK

Standard



HANDLES AND CLEATS

Standard



QUICK FENDER RELEASE SYSTEMS

Standard



BILGE PUMPS, ELECTRIC (X3) AND MANUAL(X1)

Standard



LED NAVIGATION LIGHTS

Standard



CARBON MONOXIDE DETECTORS - 1 IN FRONT CABIN AND 1 IN WHEELHOUSE

Standard



FIRE EXTINGUISHER MOUNTING

Standard



AFT GLASS WALL

Standard



TOILET WITH SEA WATER FLUSH AND BLACK WATER TANK

Standard



MERCURY ACTIVE TRIM

Standard

Active Trim's intuitive hands-free automation continuously adjusts the engine trim angle to improve performance, fuel economy and ease of driving.



POWER STEERING WITH ADJUSTABLE STEERING WHEEL

Standard



WIRELESS CHARGING AND 12V OUTLETS

Standard



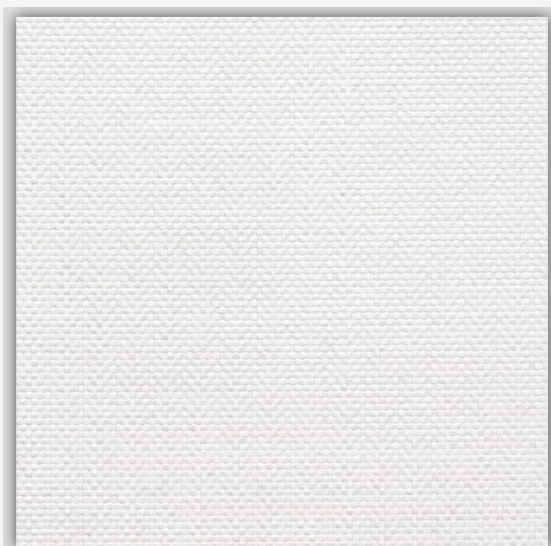
ELECTRICALLY OPERATED TECHNICAL HATCH

Standard



UPHOLSTERY MARBLE

Standard



MARBLE

3 X INDIVIDUAL SEATS AT DRIVERS ROW

Standard



SOFA IN THE WHEELHOUSE

Standard



KITCHEN MODULE WITH DRAWERS AND WASTE BIN

Standard



TEAK TABLE IN WHEELHOUSE

Standard

(standard table is with two fixed table legs, picture shows the electrical table leg option.)



CUP HOLDERS IN CONSOLE AND FOR PASSENGERS

Standard



CEILING LIGHTS X8

Standard



VINYL CARPET

Standard (will be added later)

LEATHER STEERING WHEEL

Standard



FRONT CABIN COMFORT MATTRESSES

Standard



FRONT CABIN COMFORT SEAT

Standard



VINYL CARPETS IN FRONT CABIN

Standard (will be added later)

COMFORT AND READING LIGHTS

Standard



LED LIGHTS IN THE SLEEPING AREA AND STAIRCASE

Standard



MIRROR IN FRONT CABIN

Standard



SAXDOR 320GTC WITH ENGINES: 2 X MERCURY V6 CMS 200 BLACK

SX320GTC-E-001



SAXDOR 320GTC WITH ENGINES: 2 X MERCURY V6 CMS 225 BLACK

SX320GTC-E-002



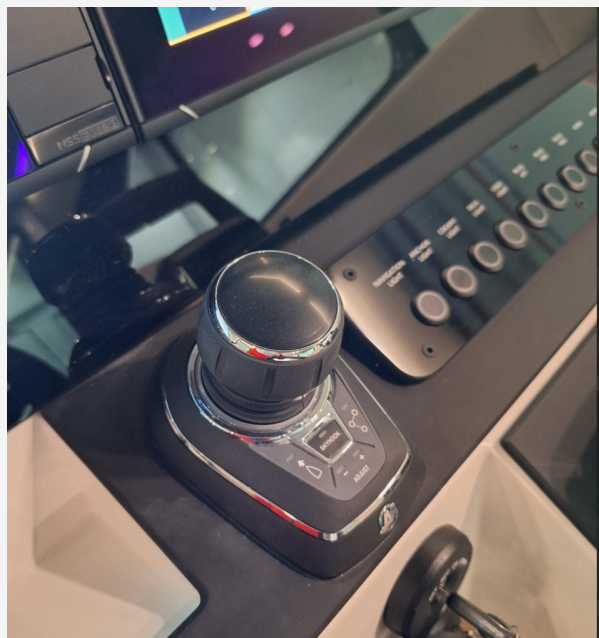
SAXDOR 320GTC WITH ENGINES: 2 X MERCURY V8 AMS 300 BLACK

SX320GTC-E-003 (combine in one)



SAXDOR 320GTC WITH ENGINES: JOYSTICK CONTROL(JPO) AVAILABLE ONLY WITH V8 ENGINES

SX320GTC-T-001



SAXDOR 320GTC WITH ENGINES: ADVANCED JPO PACKAGE

SX320GTC-P-008

(Requires 2x V8 and JPO option)

Proportional bow thruster integrated with
Mercury JPO (cannot be combined with
Bow thruster)



SAXDOR 320GTC WITH ENGINES: WHITE TWIN ENGINE AVAILABLE WITH ALL ENGINE OPTIONS

SX320GTC-E-004



GELCOAT HULL COLORS: WHITE

Standard



**GELCOAT HULL
COLORS:
STORM GREY**

SX320GTC-C-005



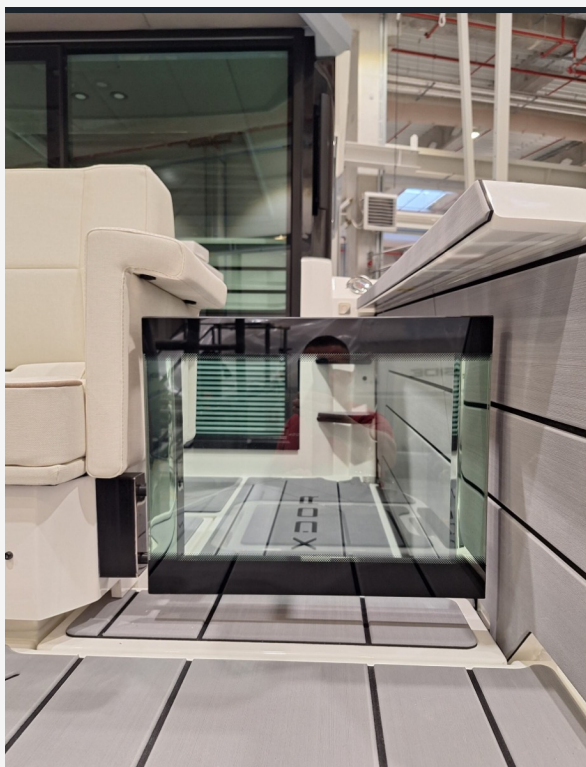
**GELCOAT HULL
COLORS:
FLORIDA BLUE**

SX320GTC-C-010



DECK MATERIAL: SOFT DECK

SX320GTC-O-005



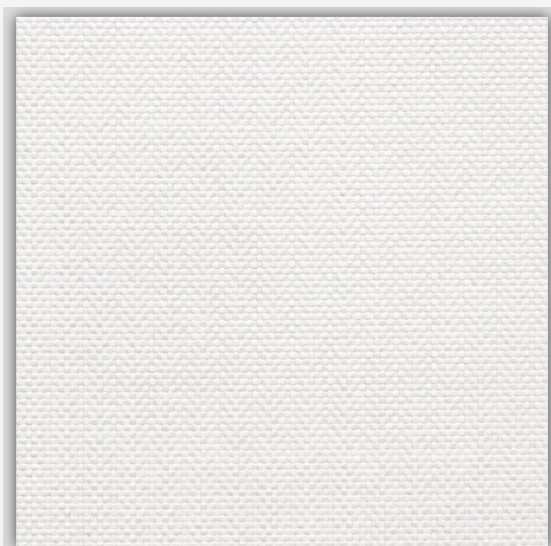
DECK MATERIAL: FLEXITEEK (NOT IN WHEELHOUSE)

SX320GTC-O-026



UPHOLSTERY COLORS: MARBLE

Standard



MARBLE

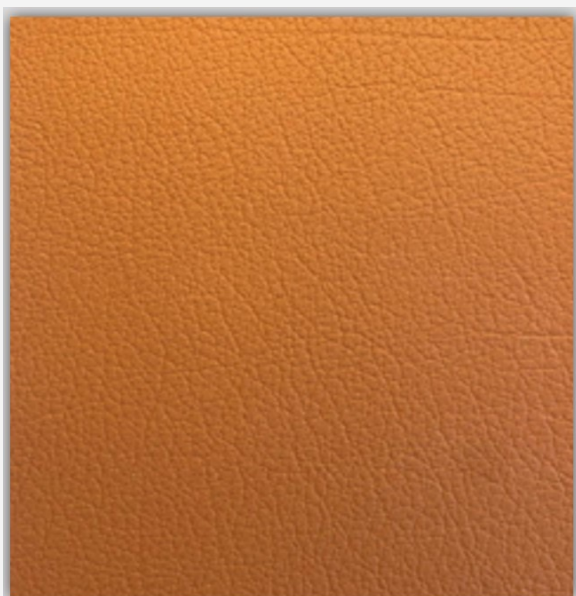
UPHOLSTERY COLORS: CORAL BLUE

SX320GTC-C-007



UPHOLSTERY COLORS: COGNAC SHOT

SX320GTC-C-008

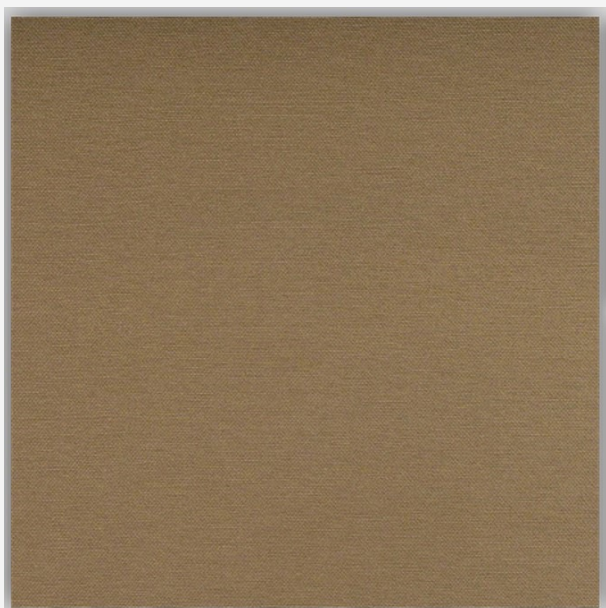


COGNAC SHOT



UPHOLSTERY COLORS: NOUGAT

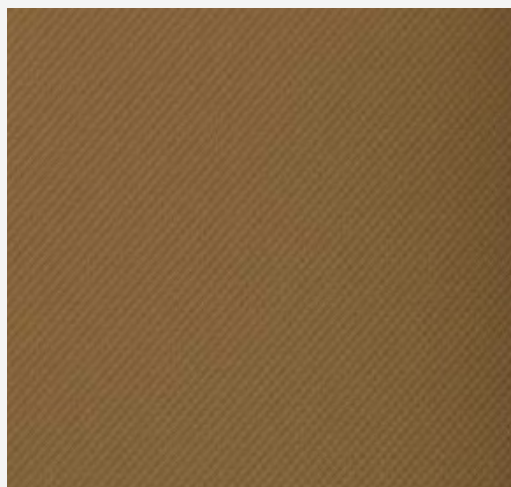
SX320GTC-C-009



NOUGAT

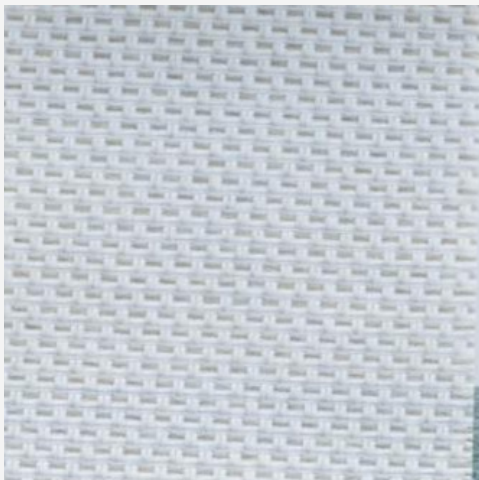
UPHOLSTERY COLORS: HONEY

SX320GTC-C-012



UPHOLSTERY COLORS: CREAM & BRONZE (ONLY WHEELHOUSE)

SX320GTC-C-010



UPHOLSTERY & SUNSHADES: FRONT DECK SUNBED INCLUDING COVER

SX320GTC-O-030



UPHOLSTERY & SUNSHADES: FRONT SUNSHADE FOR STATIONARY USE CARBON

SX320GTC-O-018



**UPHOLSTERY & SUNSHADES:
AFT DECK SOFA WITH COVER +
AFT GLASS GATES AND WHITE
GRP TABLE ON FIXED LEGS
WITH COVER**

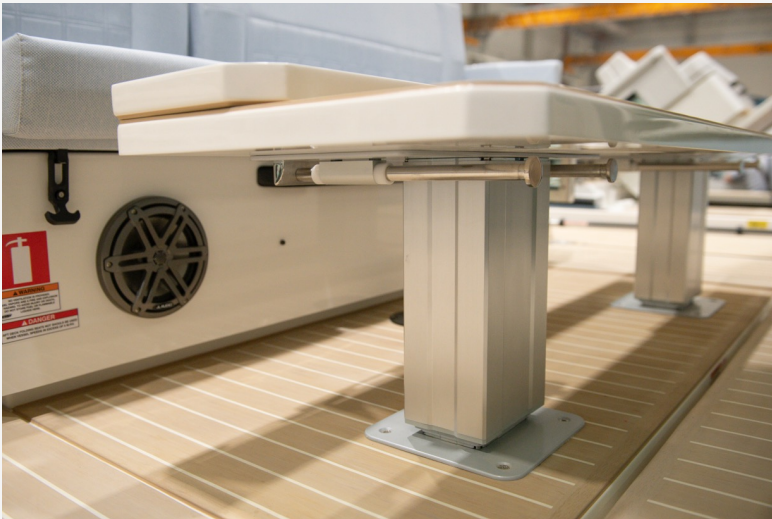
SX320GTC-O-027



UPHOLSTERY & SUNSHADES: SUNBED SOLUTION

SX320GTC-O-024

A larger RTM table on electrically operated legs with an upholstered cushion to unfold the sundeck (requires selection of aft sofa)



UPHOLSTERY & SUNSHADES: FLEXITEEK ON THE TABLE IN THE AFT SOFA OPTION

SX320GTC-O-028

(Requires selection of aft sofa)



UPHOLSTERY & SUNSHADES: AFT SUNSHADE - CARBON

SX320GTC-O-017



NAVIGATION PACKAGES: NAVIGATION PACKAGE

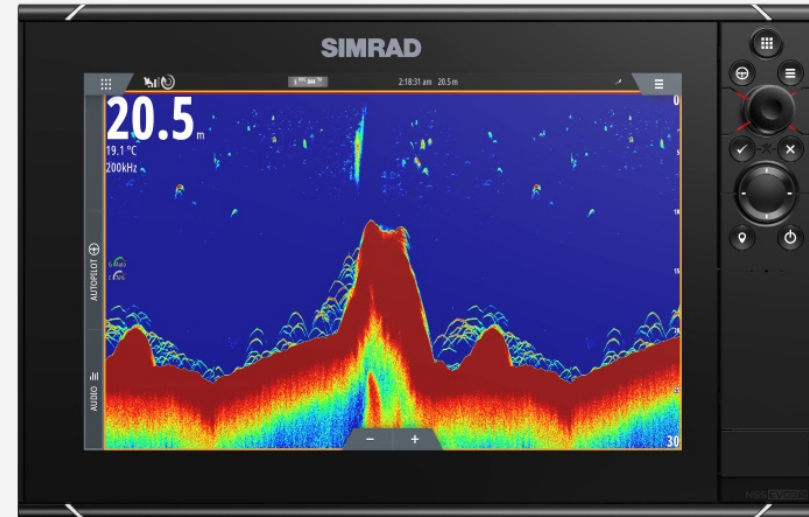
SX320GTC-P-010

1 x Simrad NSS12 Evo3S

Simrad Echosounder P79

Saxdor User interface with system
monitoring

Mercury integration



NAVIGATION PACKAGES: ADVANCED NAVIGATION PACKAGE

SX320GTC-P-011

2 x Simrad NSS12 Evo3S

Simrad RS100-B VHF and Class-B AIS w.
splitter

Simrad Echosounder P79

Saxdor User interface with system
monitoring

Mercury integration



**NAVIGATION:
SIMRAD HALO20+
RADAR**

SX320GTC-N-001



**NAVIGATION:
SIMRAD HALO24
RADAR**

SX320GTC-N-004



NAVIGATION: GPS COMPASS

SX320GTC-N-005



TECHNOLOGY: SIMRAD RS100 VHF-B WITH BIDIRECTIONAL AIS

SX320GTC-N-003

(Cannot be combined with advanced navigation package)

*Navigation package needs to be selected first



TECHNOLOGY: ZIPWAKE INTERCEPTORS SYSTEM

SX320GTC-T-023



TECHNOLOGY: ZIPWAKE MINI CONTROLLER

SX320GTC-T-024



TECHNOLOGY: BOW THRUSTER

SX320GTC-T-006



**TECHNOLOGY:
CATAPULT BOW WINDLASS
WITH 40M CHAIN,
TRADITIONAL WINDLASS
WITH CHAIN GYPSY**

SX320GTC-T-007

(Only available with bow thruster option or
advanced JPO package)



POWER & PACKAGES: TOILET AND FRESH WATER PACKAGE UPGRADE

SX320GTC-P-012

Fresh water system

Electric toilet

Black water tank

Macerator

Deck and bathroom handheld bidet shower



POWER & PACKAGES: GREY WATER TANK

SX320GTC-O-019

(Available only with fresh water package)

SHORE POWER SYSTEM EU 230V

SX320GTC-T-021

- Mastervolt charger 35 amp
- Shore power system with intake, galvanic isolator and fuse-box
- Shore power cable 15 meter / 16 amp
- Electric panel for AC and DC in cabin
- Wall sockets

*Navigation package is needed for battery and shore power reading and system control



HOT CLIMATE PACKAGE 230V EU 6KWH

SX320GTC-P-013

- Air conditioning 12K BTU
 - Generator replacement system (including Mastervolt 6kW Lithium battery)
 - Mastervolt CombiMaster 230 volt – 3kW. 24 volt – 60 amp
 - Inverter and 230V power outlets
- (Cannot be combined with cold climate package – Shore power package needs to be selected)



ADDITIONAL 6KWH LITHIUM BATTERY

SX320GTC-T-014

(Available only with hot climate package)



COLD CLIMATE PACKAGE

SX320GTC-P-014

- Diesel air heater (4kW)
- Diesel tank (25L) with deck fill

(Cannot be combined with Hot climate package – shore power package needs to be selected)



**BATTERIES:
2 X OPTIMA BT 1000
MCA START BATTERIES
& 1 X MVG GEL 140 AH**

SX320GTC-T-015



BATTERIES: 1 X OPTIMA BT 1000 MCA BATTERY FOR BOW THRUSTER

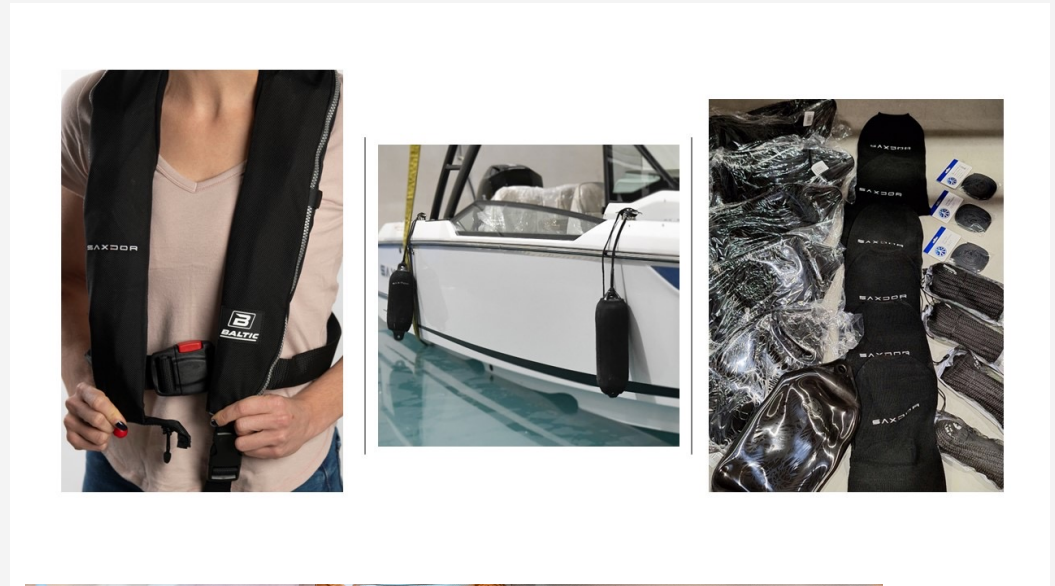
SX320GTC-T-016

(Advanced JPO pack or bow thruster needs
to be selected first)



SAXDOR LIFESTYLE AND MOORING PACKAGE

- SX320GTC-P-007
- 6 x fenders (black) + 6 x fender covers (black) + 6 x fender lines (6mm/1,5m)
- 4 x mooring lines (14mm/6m)
- Anchor + anchor line (14mm/40m)
- Mattress topper for front cabin and ergonomic mattress base
- Saxdor life jackets (4pcs)
- Saxdor weekend bag



AUDIO: BASIC AUDIO PACKAGE

SX320GTC-A-002

- 4 x Clarion CMSP-771RGB-SWG speakers

*Navigation package needs to be selected first (more info about speakers)



AUDIO: ADVANCED AUDIO PACKAGE

SX320GTC-A-003

- 2 x JL Audio O-C1-650-F-Sw speakers
 - 6 x JL Audio M3-770X-S-Gm-i speakers
 - JL Audio MX280/4 - 4 channel amplifier
 - JL Audio XDM600/6 - 6 channel amplifier
 - JL Audio M3-10IB-S-Gm-i - subwoofer
- *Navigation package needs to be selected first (more info)



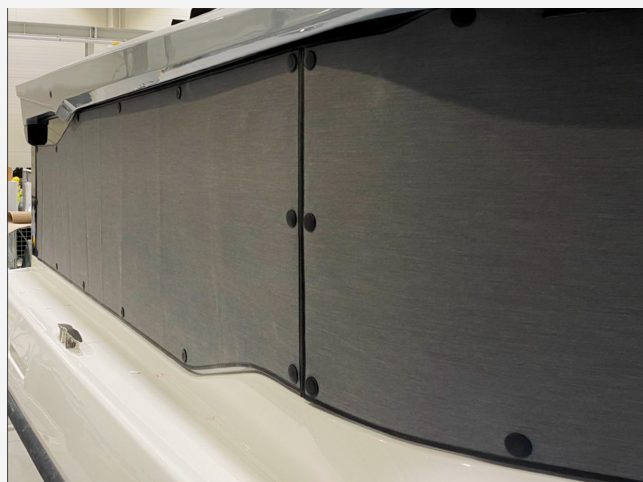
WHEELHOUSE EQUIPMENT: OPENING SIDE WINDOWS IN WHEELHOUSE

SX320GTC-O-009



WHEELHOUSE EQUIPMENT: WHEELHOUSE WINDOW COVERS

SX320GTC-O-023



WHEELHOUSE EQUIPMENT: SLEEPING SOLUTION IN WHEELHOUSE

SX320GTC-O-029



WHEELHOUSE EQUIPMENT: REFRIGERATOR IN KITCHEN MODULE

SX320GTC-O-003



WHEELHOUSE EQUIPMENT: ADDITIONAL REFRIGERATOR IN WHEELHOUSE

SX320GTC-O-020

51 litres drink model (no freezer box)



WHEELHOUSE EQUIPMENT: ELECTRIC STOVE 230V KENYON MODEL

SX320GTC-T-019

(Available only with shore power, cannot be
combined with diesel stove)



WHEELHOUSE EQUIPMENT: DIESEL STOVE

SX320GTC-T-012

(Only available with cold climate package,
cannot be combined with electric stove)



WHEELHOUSE EQUIPMENT: WHEELHOUSE FLOOR LIGHTS

SX320GTC-O-016



WHEELHOUSE EQUIPMENT: WOODEN FLOOR IN WHEELHOUSE

SX320GTC-O-010



COMFORT: POP UP CLEATS

SX320GTC-O-025

Replacement of 2 standard aft cleats with
pop up ghost model



COMFORT: WATER SKI POLE

SX320GTC-O-001



COMFORT: CURTAINS IN FRONT CABIN AND MOSQUITO NETS FOR HATCHES

SX320GTC-O-006



COMFORT: DECK LIGHTS

SX320GTC-O-015



DIMENSIONS:



DIMENSIONS:

DIMENSIONS: Air Draft (height from water line)



SUMMARY:

- Cruising speed: 28-35 knots
- 400-600 HP
- 6-9 persons (B & C cat.)
- Length: 10.32 metres
- Weight: 4800 kg (depending on engines and options)
- Starting from 2,4 L/NM at optimal cruising (depending on engines and options)

