

SAXDOR 340GTWA



3.1.2025 Helsinki

SAXDOR

VACUUM INFUSED HULL & DECK – GELCOAT RAL 9010 (WHITE)

Standard



ANTI-SKID FINISHING ON DECK AND HATCHES

Standard



ELECTRIC OPENING SIDE TERRACES

Standard



INTEGRATED HANDRAILS ON DECK

Standard



1 X FLUSH MOUNTED HATCH ON FRONT DECK

Standard



TELESCOPIC BATHING LADDER

Standard



HANDLES AND CLEATS

Standard



QUICK FENDER RELEASE SYSTEM INCLUDING ON TERRACES

Standard



POWER STEERING WITH ADJUSTABLE STEERING WHEEL

Standard



MERCURY ACTIVE TRIM

Standard

Active Trim's intuitive hands-free automation continuously adjusts the engine trim angle to improve performance, fuel economy and ease of driving.



WIRELESS CHARGING AND 12V OUTLETS

Standard



2 X INDIVIDUAL SEATS AT DRIVERS ROW

Standard



REAR SOFA IN THE WHEELHOUSE

Standard



TABLE IN WHEELHOUSE

Standard (will be added later)

COMFORT AND READING LIGHTS

Standard



FRONT CABIN COMFORT MATTRESSES

Standard



CARPETS IN FRONT CABIN

Standard (will be added later)

LED INTERIOR LIGHTS

Standard



MIRROR IN FRONT CABIN

Standard



CUP HOLDERS

Standard



LEATHER STEERING WHEEL

Standard



BILGE PUMPS, ELECTRIC AND MANUAL

Standard



LED NAVIGATION LIGHTS

Standard



CARBON MONOXIDE ALARM

Standard



**SAXDOR 340GTWA
WITH ENGINES:
2 X MERCURY V8 AMS
250 - BLACK**

SX340GTW-E-004

**SAXDOR 340GTWA
WITH ENGINES:
2 X MERCURY V8 AMS
300 - BLACK**

SX340GTW-E-003

SAXDOR 340GTWA WITH ENGINES: JOYSTICK CONTROL (JPO)

SX340GTW-T-010

Available only with V8 engines



ADVANCED JPO PACKAGE

SX340GTW-P-001

Bow thruster integrated to the Joystick
control system

(Requires 2 x V8 engines & Joystick option
selected)



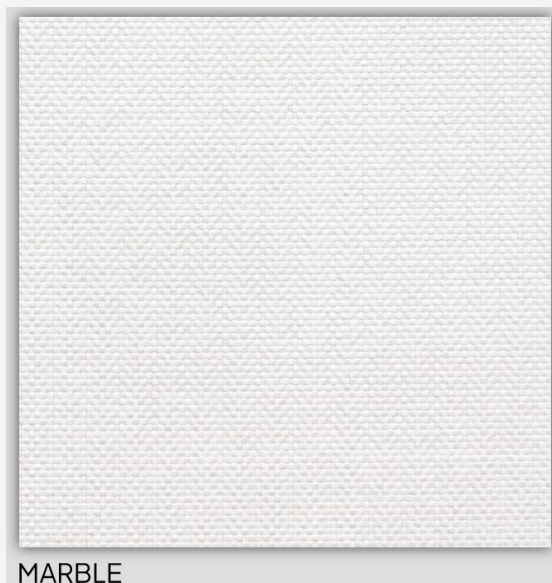
SAXDOR 340GTWA WHITE TWIN ENGINES AVAILABLE WITH ALL ENGINE OPTIONS

SX340GTW-E-005



UPHOLSTERY COLOR: MARBLE

Standard



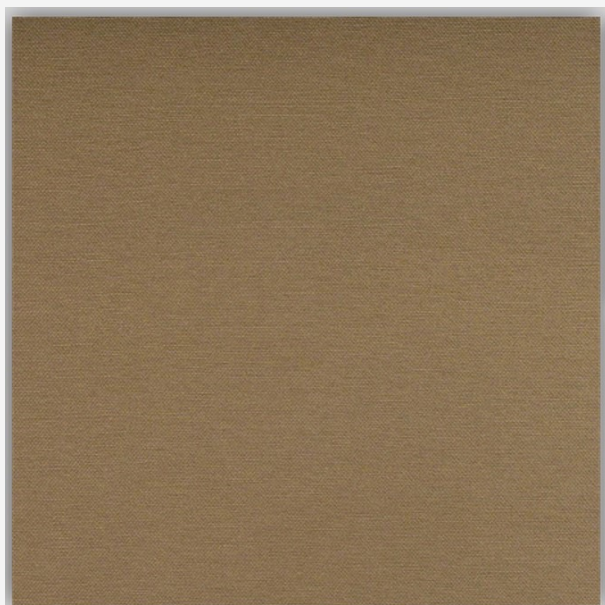
**UPHOLSTERY COLOR:
CORAL BLUE**

SX340GTW-C-003



UPHOLSTERY COLOR: NOUGAT (FABRIC VINYL)

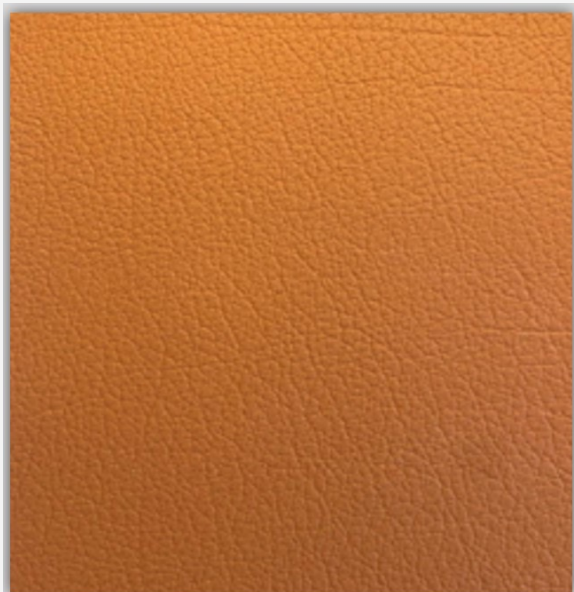
SX340GTW-C-004



NOUGAT

**UPHOLSTERY COLOR:
COGNAC SHOT
(LEATHER LIKE VINYL)**

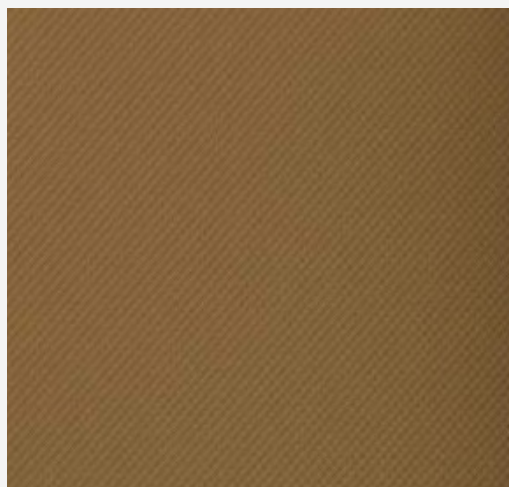
SX340GTW-C-005



COGNAC SHOT

UPHOLSTERY COLOR: HONEY (VINYL)

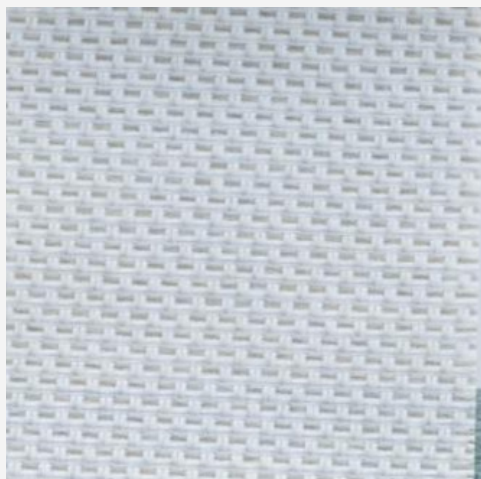
SX340GTW-C-007



UPHOLSTERY COLOR: CREAM & BRONZE - WHEELHOUSE FABRIC UPGRADE OPTION

SX340GTW-C-006

(comes on top of optional fabric)



GELCOAT HULL COLOR: WHITE

Standard



GELCOAT HULL COLOR: STORM GREY

SX340GTW-C-001



GELCOAT HULL COLOR: FLORIDA BLUE

SX340GTW-C-002



DECK MATERIAL: ANTI-SKID

Standard



**DECK MATERIAL:
FLEXITEEK (DOESN'T
INCLUDE MAIN CABIN)**

SX340GTW-O-002



GLASS ELECTRIC ROOF HATCH

SX340GTW-O-026



NAVIGATION PACKAGE:

SX340GTW-P-002

1 x Simrad NSS12 Evo3S

Simrad echosounder P79

Saxdor User interface with monitoring

Saxdor Connect – Remote control and
monitoring system

Mercury integration

ADVANCED NAVIGATION PACKAGE:

SX340GTW-P-003

2 x Simrad NSS12 Evo3S

Simrad RS100-B VHF and Class-B AIS w.
splitter

Simrad echosounder P79

Saxdor User interface with monitoring
Saxdor Connect – Remote control and
monitoring system

Mercury integration



**NAVIGATION
TECHNOLOGY:
SIMRAD HALO20+
RADAR**

SX340GTW-N-001



**NAVIGATION
TECHNOLOGY:
SIMRAD HALO24
RADAR**

SX340GTW-N-002



GPS COMPASS FOR RADAR-OVERLAY

SX340GTW-N-003

(Radar should be selected first)



NAVIGATION TECHNOLOGY: SIMRAD RS100-B VHF RADIO AND AIS

SX340GTW-N-004

(Cannot be combined with advanced
navigation package)



OPTION PACKAGES: AFT CABIN PACKAGE

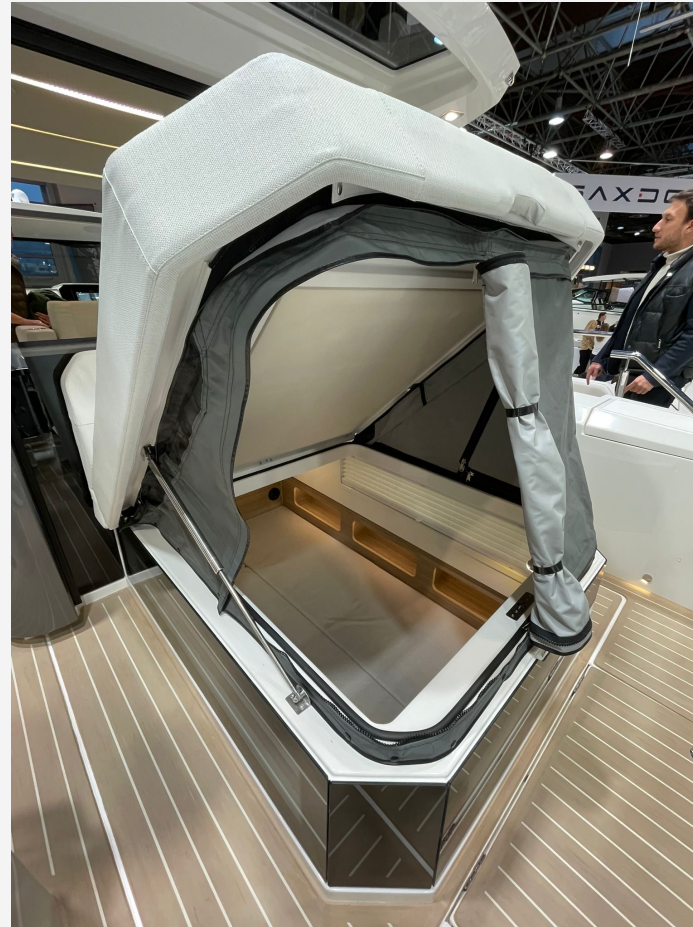
SX340GTW-P-005

- Aft cabin module with windows and port lights
- Access from inside the wheelhouse and from big hatch from aft deck
- Upholstered roof and wall panels
- Ambient lights
- Reading lights
- USB and power outlets
- Sleeping mattress
- Air conditioned / heated (when selected)
- Carbon monoxide alarm



OPTION PACKAGES: AFT CABIN TENT

SX340GTW-O-035



OPTION PACKAGES: FRESH WATER AND TOILET PACKAGE

SX340GTW-P-016

- Fresh water system with 100 liters of tank capacity
- Wash basin in cabin
- Aft deck shower
- With sink on aft
- Electric toilet
- Black water tank with level sensor connected to Simrad system
- Macerator and vacuum disposal system



GREY WATER TANK (50L)

SX340GTW-O-009

OPTION PACKAGES: LIGHT PACKAGE

SX340GTW-P-010

- Ambient interior roof lights
- Ambient interior floor lights
- Exterior deck lights



OPTION PACKAGES: SHORE POWER SYSTEM

SX340GTW-O-027

- Mastervolt charger 35 amp
 - Shore power system with intake, galvanic isolator and fuse-box
 - Shore power cable 15 meter / 16 amp
 - Electric panel for AC and DC in cabin
 - Wall sockets
- *Navigation package is needed for battery and shore power reading and system control



OPTION PACKAGES: HOT CLIMATE AND POWER PACKAGE

SX340GTW-P-011

- Air conditioning 16K BTU
- Generator replacement system (including Mastervolt 6kW Lithium battery)
- Mastervolt CombiMaster 230 volt – 3kW. 24 volt –60 amp
- Inverter and 230V power outlets
(Cannot be combined with cold climate package – Shore power package needs to be selected)



ADDITIONAL 6KWH LITHIUM BATTERY

SX340GTW-O-024

(Available only with hot climate and power package)



OPTION PACKAGES: COLD CLIMATE PACKAGE

SX340GTW-P-013

- Diesel air heater (4kW)
- Defrost windshield
- Diesel tank (25L) with deck fill

(Cannot be combined with hot climate package. Shore power required)



OPTION PACKAGES: SAXDOR LIFESTYLE PACKAGE

SX340GTW-P-014

- Mooring equipment
 - 6 x fenders (black) + 6 x fender covers (black) + 6 x fender lines (6mm/1,5m)
 - 4 x mooring lines (14mm/6m)
 - 7,5kg anchor + anchor line (14mm/40m)
- Saxdor life jackets (4 pcs)
- Saxdor key floater
- Saxdor bag



**BATTERIES:
OPTIMA BLUETOP 5.0 845
CCA STARTER BATTERIES
FOR TWO ENGINES & DEEP
CYCLE GEL BATTERY FOR
HOUSE GROUP, 140 AH**

SX340GTW-O-021



**BATTERIES:
OPTIMA BLUETOP 5.0
845 CCA BATTERY FOR
BOW THRUSTER &
WINDLASS**

SX340GTW-O-030



TECHNOLOGY: BOW THRUSTER

SX340GTW-T-001

(Cannot be combined with advanced JPO package)



TECHNOLOGY: WINDLASS WITH CATAPULT ARM

SX340GTW-T-002

Length weight height

(Requires bow thruster option)



TECHNOLOGY: ZIPWAKE - TRIM SYSTEM

SX340GTW-T-008



TECHNOLOGY: ZIPWAKE - MINI CONTROLLER

SX340GTW-T-011



TECHNOLOGY: UNDERWATER LIGHTS

SX340GTW-T-009

TECHNOLOGY: CURVED LED SEARCH LIGHT



SX340GTW-T-005



TECHNOLOGY: OMNISENSE THERMAL CAMERA

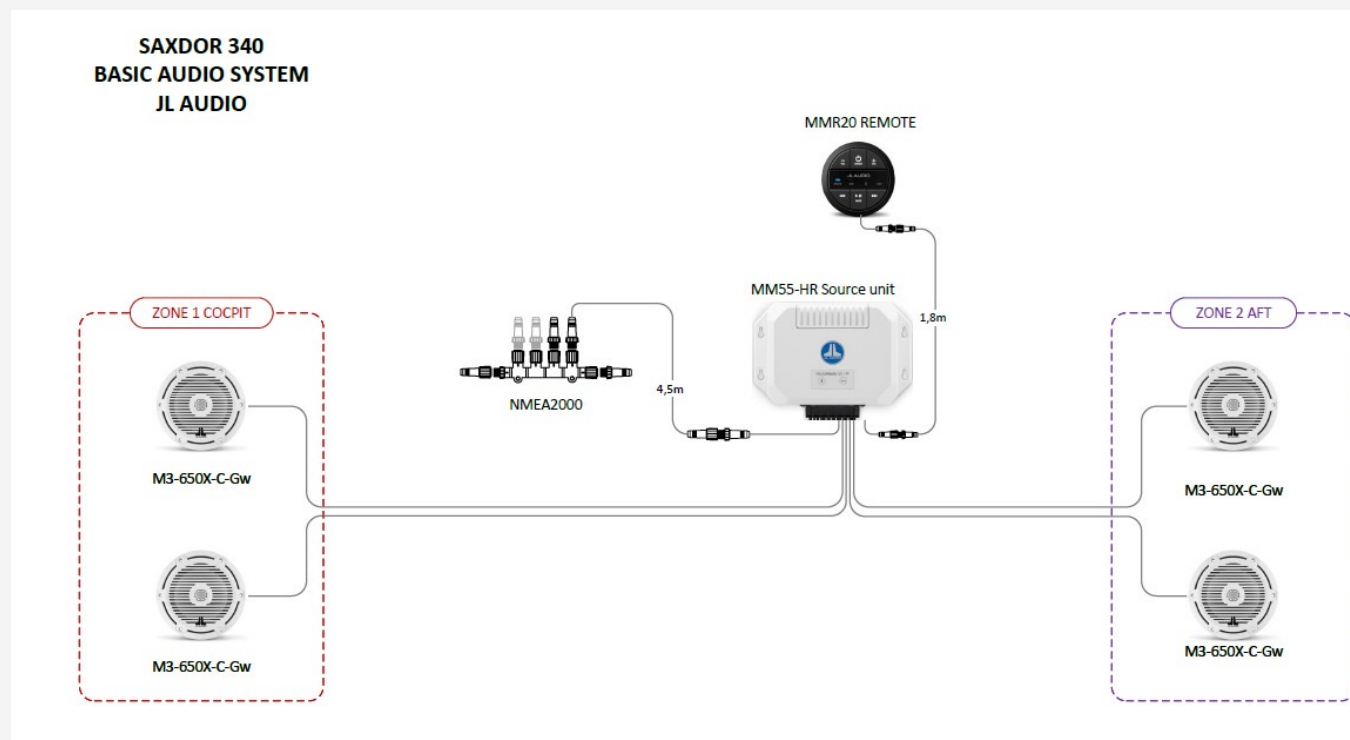
SX340GTW-T-007



AUDIO: BASIC AUDIO PACKAGE

SX340GTW-A-001

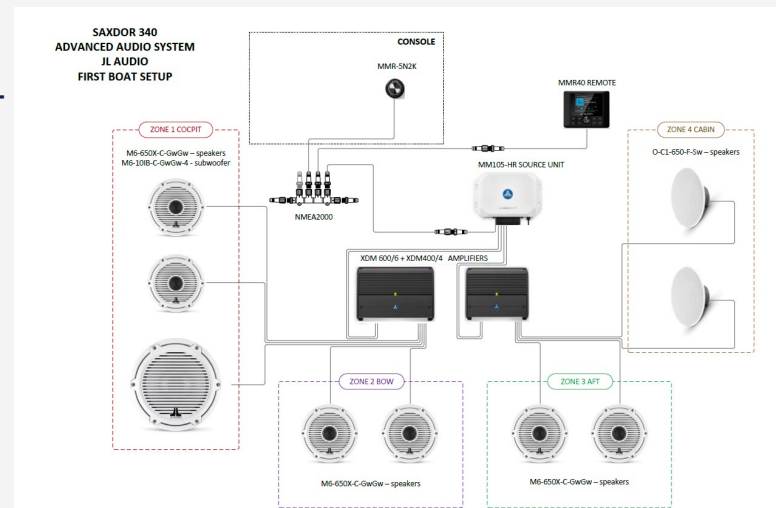
- 4 x JL Audio M3-650X-C-Gw - speakers



AUDIO: ADVANCED AUDIO PACKAGE

SX340GTW-A-002

- 2 x JL Audio O-C1-650-F-Sw speakers
- 4 x JL Audio M6-650X-L-GwSw-Single speakers
- 2 x JL Audio M6-650X-C-GwGw – speakers
- JL Audio Subwoofer 8" white O-M6-8IB-L-GwGw
- JL Audio® XDM Marine Amplifier, 8 Channel Full-Range Car and Marine Amplifier (800 W)



UPHOLSTERY OPTIONS: FRONT DECK UPHOLSTERY INCLUDING COVERS

SX340GTW-O-014



**UPHOLSTERY OPTIONS:
FRONT DECK TABLE WITH
COVER AND ELECTRIC
TABLE LEG AND INFILL
CUSHION TO CREATE FRONT
DECK SUNBED**

SX340GTW-O-028

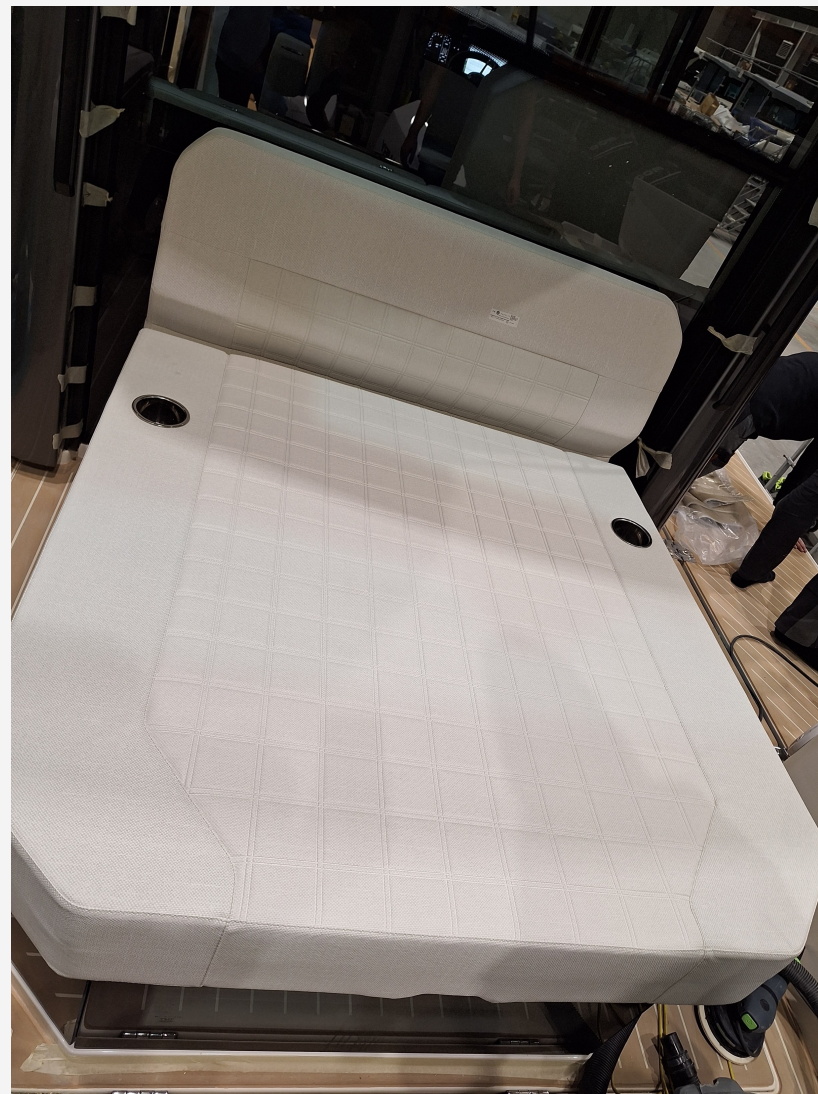
Front deck upholstery needs to be selected first)



UPHOLSTERY OPTIONS: AFT DECK SUNBED

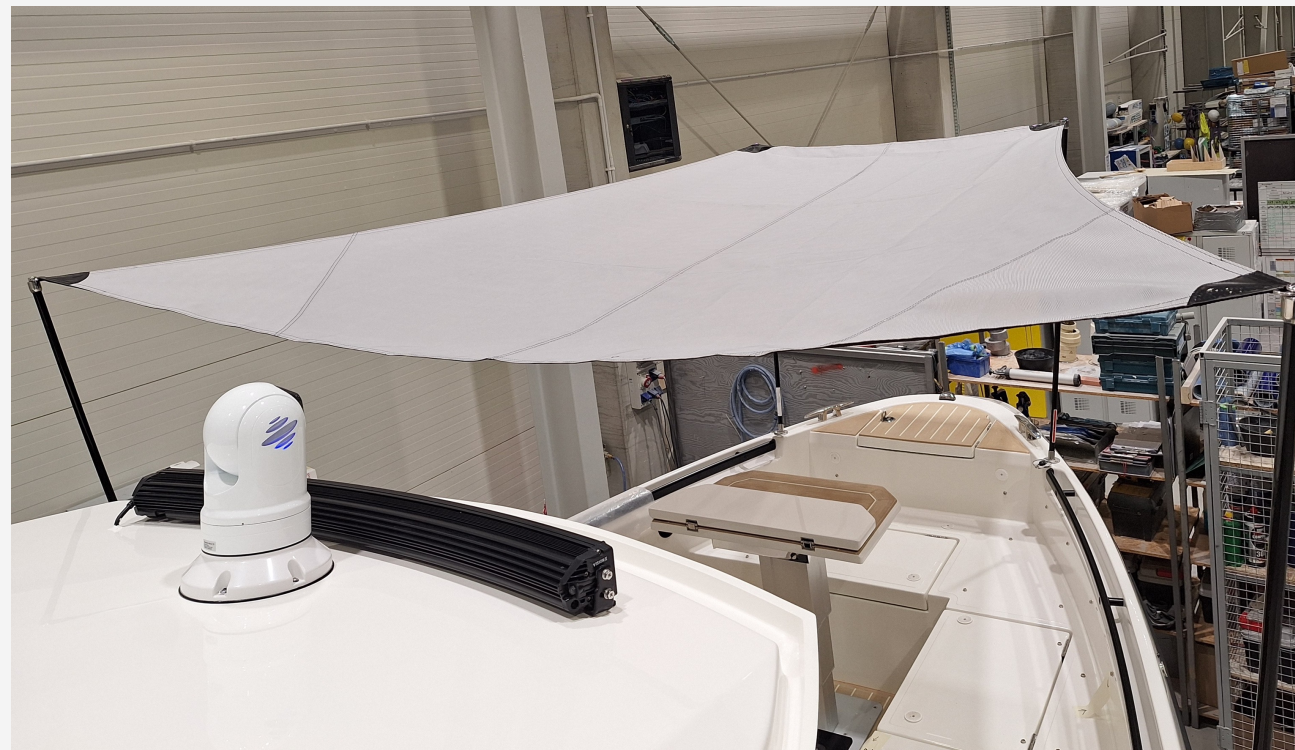
SX340GTW-O-015

(on top of aft cabin, needs to be selected
first)



UPHOLSTERY OPTIONS: FRONT SUNSHADE FOR STATIONARY USE - CARBON

SX340GTW-O-011



UPHOLSTERY OPTIONS: AFT SUNSHADE FOR STATIONARY USE – CARBON

SX340GTW-O-012



COMFORT: CURTAINS IN FRONT CABIN

SX340GTW-O-034



COMFORT: UP AND DOWN GOING ELECTRIC AFT GLASS WINDOW

SX340GTW-O-029



COMFORT: HELM SOFA – ELECTRICALLY OPERATED

SX340GTW-O-031



REFRIGERATOR IN WHEELHOUSE

SX340GTW-O-007



COMFORT: BBQ IN AFT BOX 230V

SX340GTW-O-025



COMFORT: AFT GLASS GATES

SX340GTW-O-017

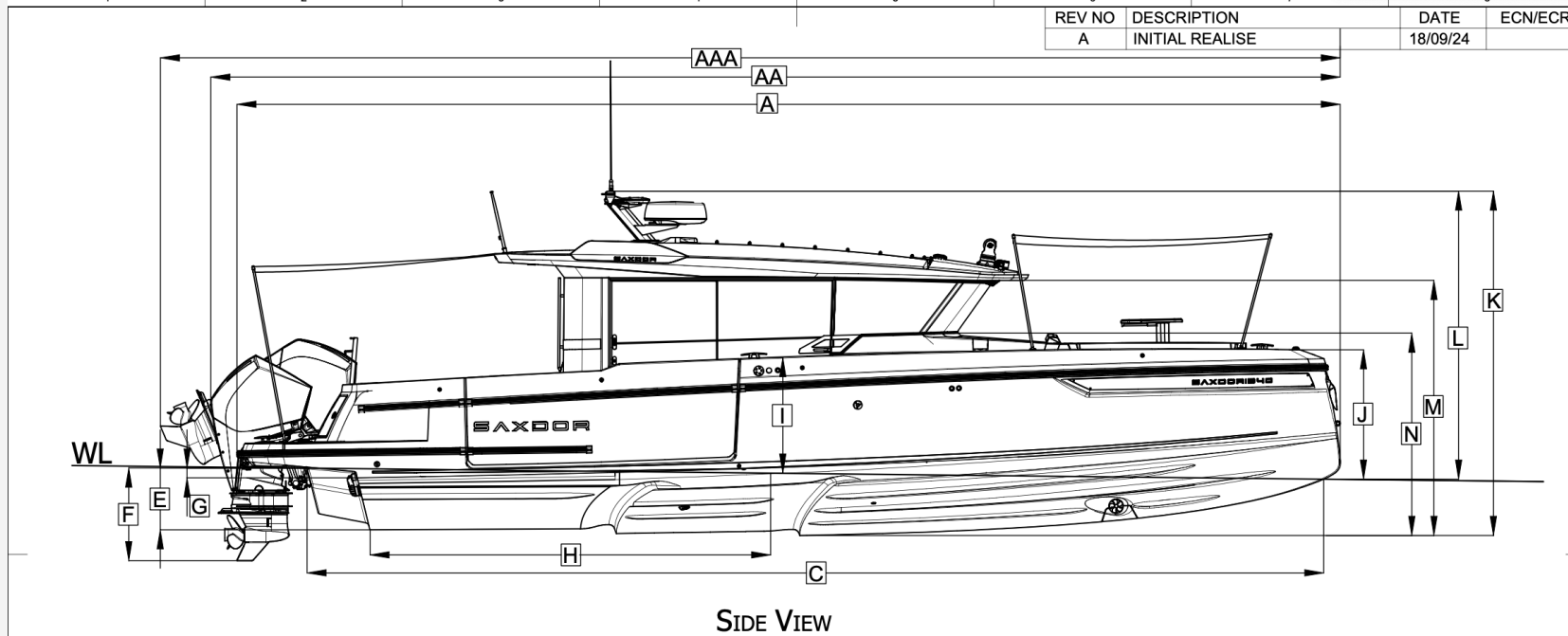


COMFORT: WATER SKI POLE

SX340GTW-O-019



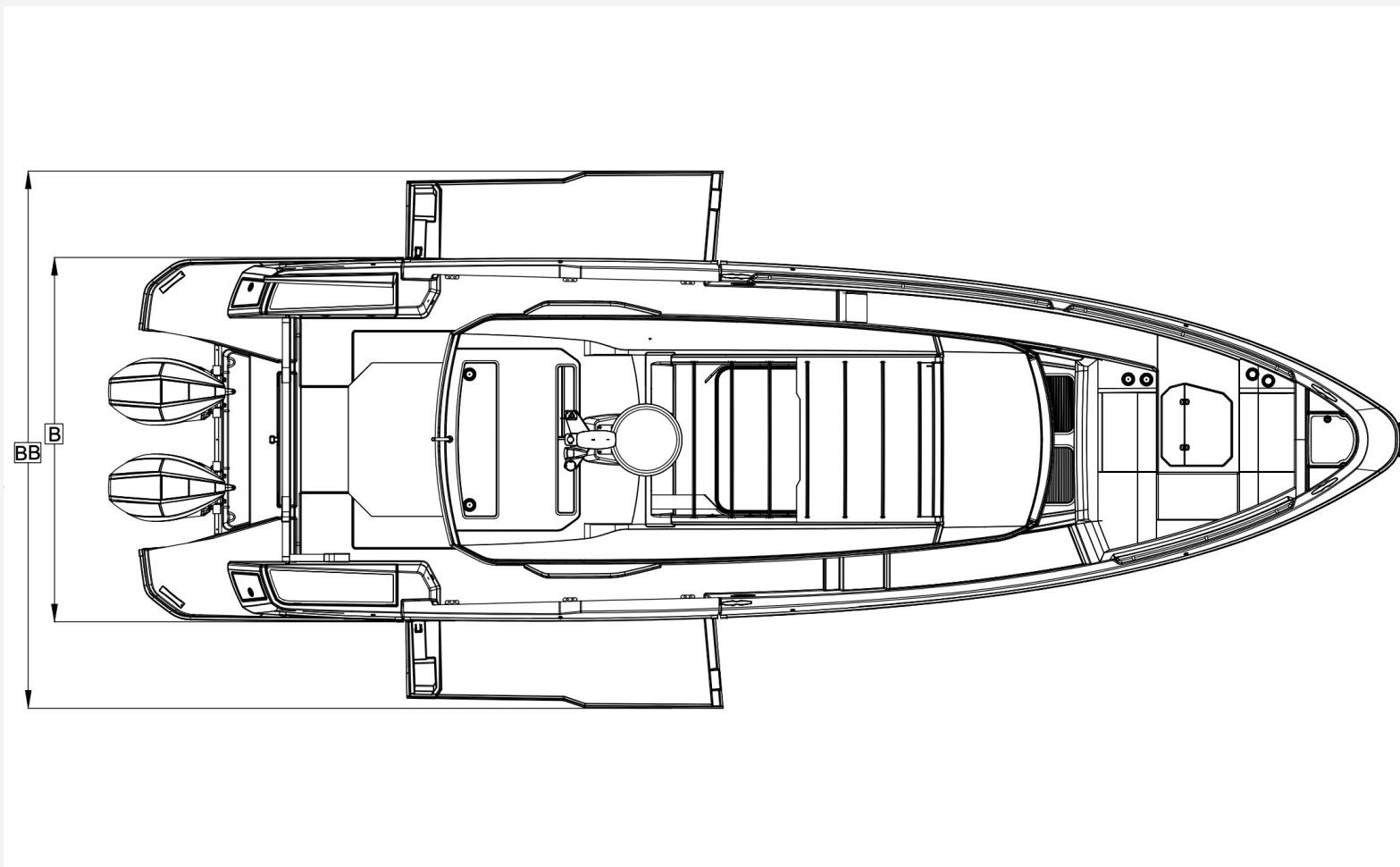
DIMENSIONS:



REV NO	DESCRIPTION	DATE	ECN/ECR
A	INITIAL REALISE	18/09/24	

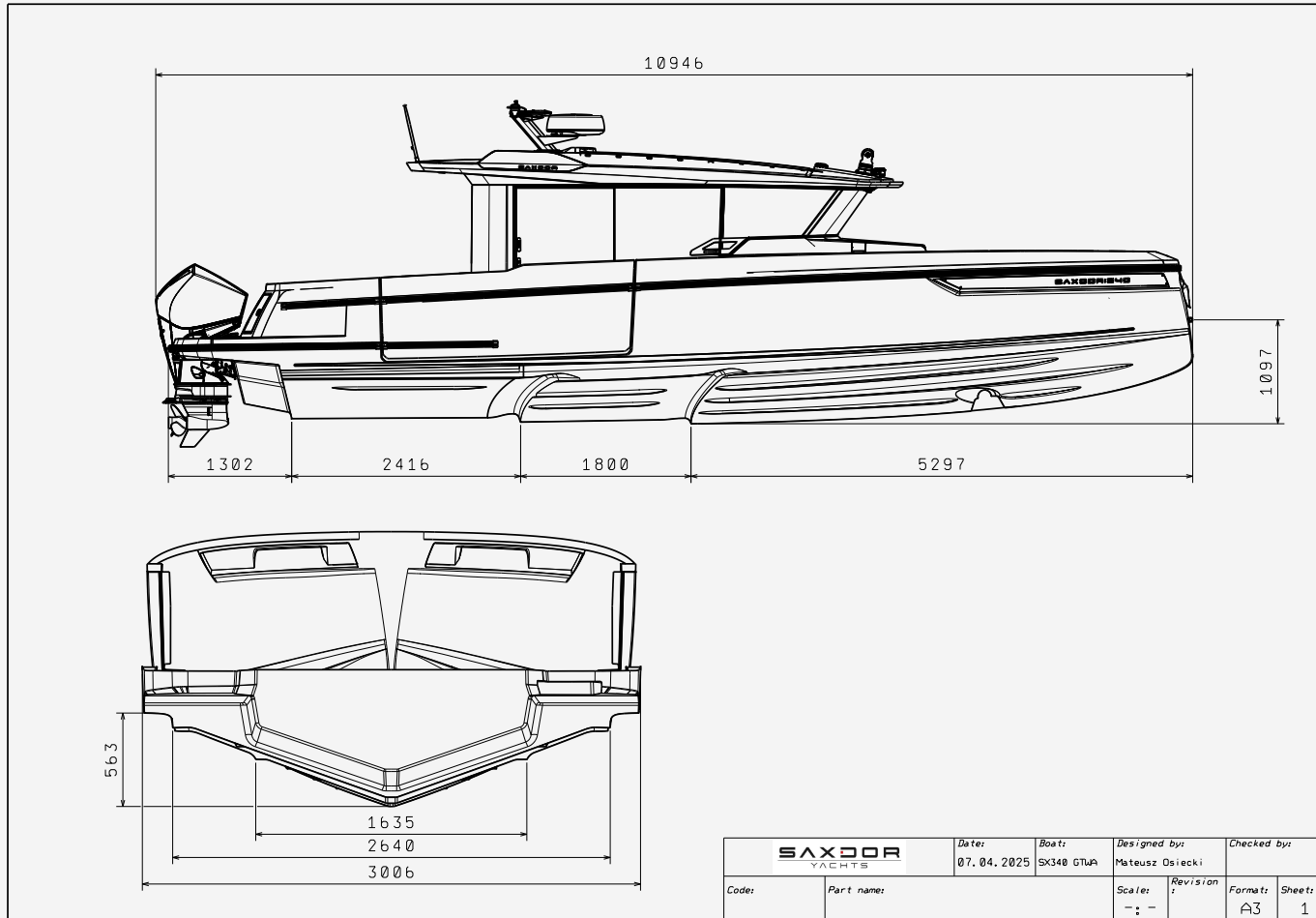
A	LENGTH OVERALL (LOA)	10.82 M	35' 6"	F	KEEL DRAFT	0.908 M	2' 11 3/4"	N	HEIGHT TO BOTTOM OF WINDSHIELD	1.98 M	6' 6"
AA	LENGTH W/ENGINE	11.07 M	36' 3 7/8"	G	CHINE SUBMERSION	0.095 M	3 3/4"	O	SWIM PLATFORM LENGTH	1.25 M	4' 1 1/5"
AB	LENGTH W/ENGINE UP	11.57 M	37' 11 1/2"	H	MIDSHIP	4.42 M	14' 6"	Q	TRANSOM ANGLE		14 deg
B	BEAM OVERALL (BOA)	3.09 M	10' 1 5/8"	I	FREEBOARD	1.12 M	3' 8"	R	OVERALL HEIGHT TO NAVI LIGHT	TBD	
BB	BEAM W/TERRACES OPEN	4.55 M	14' 11 1/8"	J	FREEBOARD AT BOW	1.21 M	3' 11 5/8"				
C	WATERLINE LENGTH (LWL)	10.08 M	33' 7/8"	K	OVERALL HEIGHT	3.37 M	11' 5/8"				
D	DEADRISE		20 deg	L	OVERALL HEIGHT FROM LWL (MMO)	2.84 M	9' 3 7/8"				
E	DRAFT	0.605 M	1' 11 5/8"	M	WINDSHIELD HEIGHT	2.50 M	8' 2 1/2"				

DIMENSIONS:



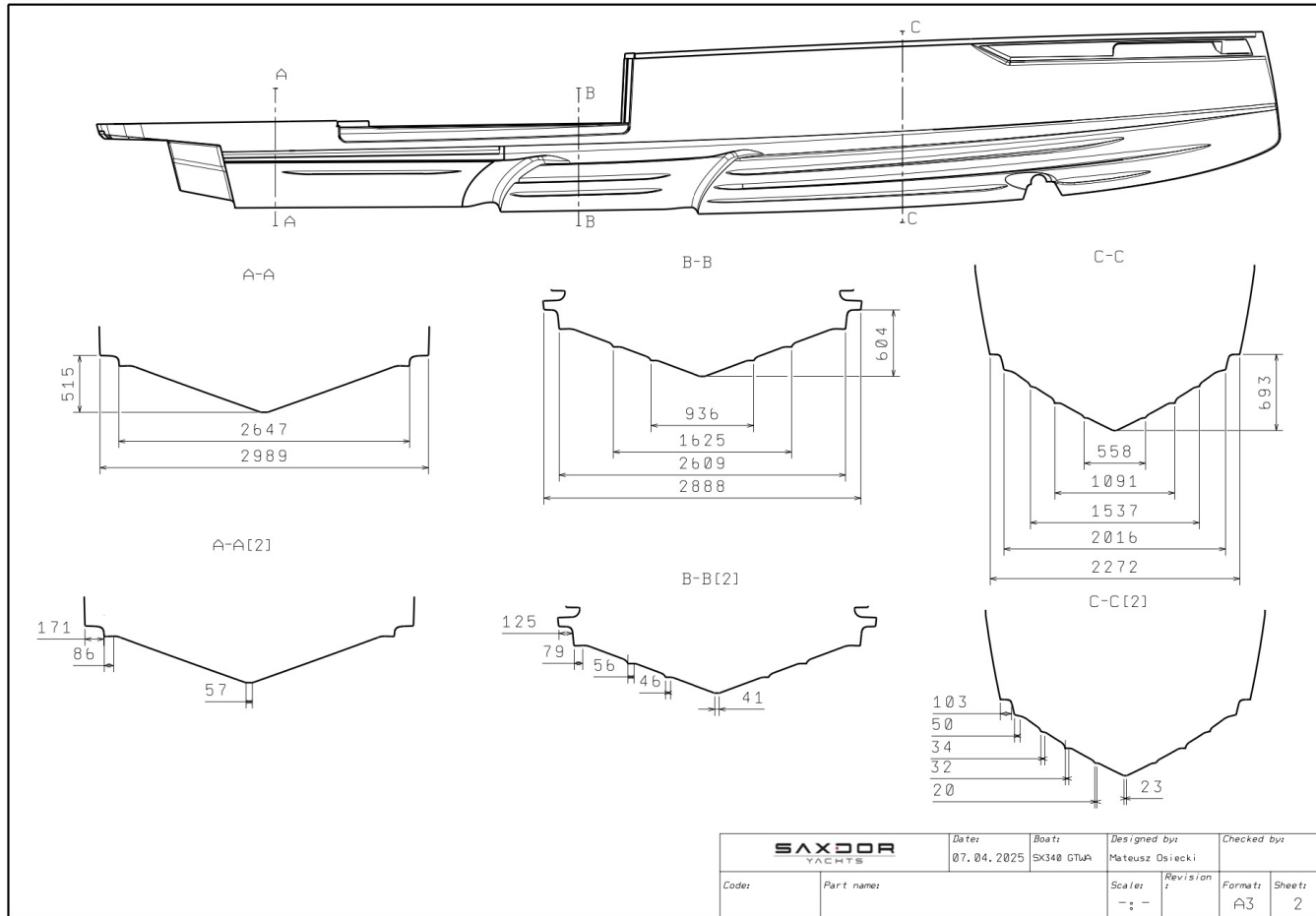
DIMENSIONS:

SAXDOR YACHTS



DIMENSIONS:

SAXDOR YACHTS



SUMMARY:

- Cruising speed: 28–35 knots
- 400–600 HP
- 9 passengers
- Length: 10,78m/35,4ft
- Width: 3,1m/10,2ft
- Dry weight: 5435 kg
- Consumption: starting at 2,5 L/NM at optimal cruising

