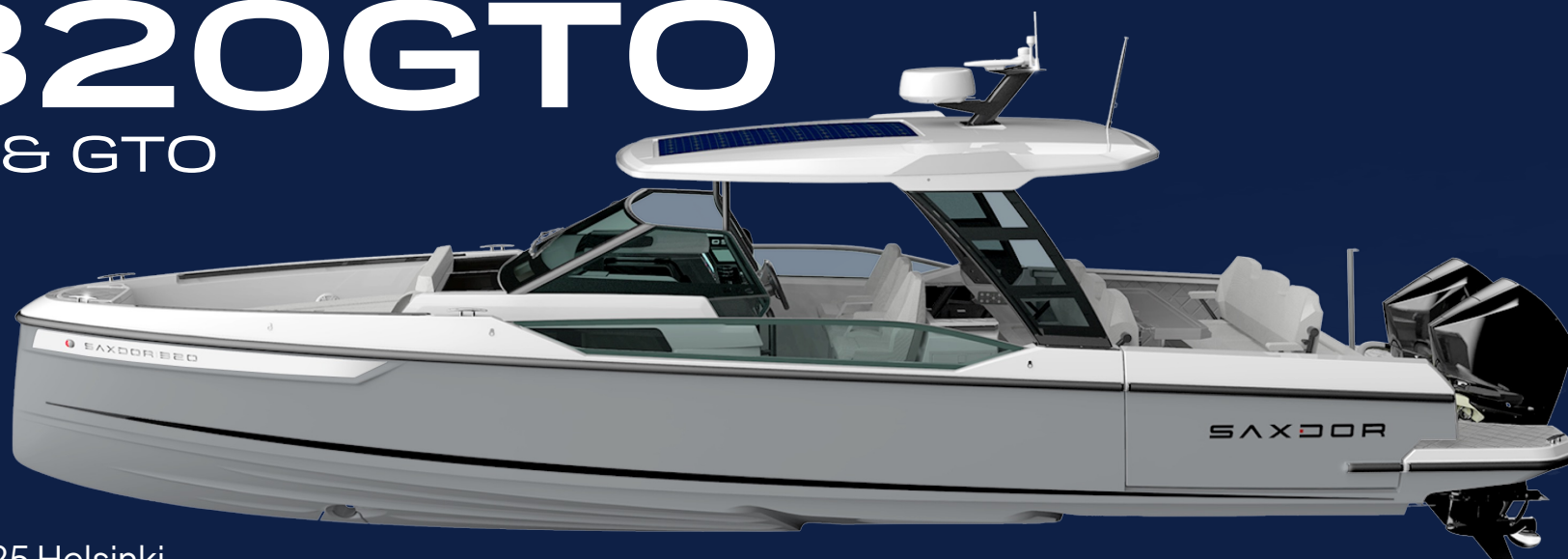


SAXDOR 320GTO

GT & GTO



3.1.2025 Helsinki
(Options valid from 1.6.2025)

SAXDOR

VACUUM INFUSED HULL - GELCOAT RAL 9010 (WHITE)

Standard



ANTI-SKID FINISHING ON DECKS AND HATCHES

Standard



ELECTRIC OPENING SIDE TERRACES

Standard



WET-BAR MODULE

Standard (sink, cabinet with drawers and additional 4 cup holders with fresh water package only) (optional fridge)



TELESCOPIC BATHING LADDER

Standard

(note: now on sliders so it doesn't stick out)



2 X FLUSH MOUNTED HATCHES ON FRONT DECK

Standard



HANDLES AND CLEATS

Standard



INTEGRATED HANDRAILS ON DECK

Standard



QUICK FENDER RELEASE SYSTEMS

Standard



BILGE PUMPS, ELECTRIC (3X) AND MANUAL (1X)

Standard



LED NAVIGATION LIGHTS

Standard



CARBON MONOXIDE DETECTORS

Standard



TOILET WITH SEAWATER FLUSH AND BLACK WATER TANK (27 LITRES)

Standard



MERCURY ACTIVE TRIM

Standard

Active Trim's intuitive hands-free automation continuously adjusts the engine trim angle to improve performance, fuel economy and ease of driving.



POWER STEERING WITH ADJUSTABLE STEERING WHEEL

Standard



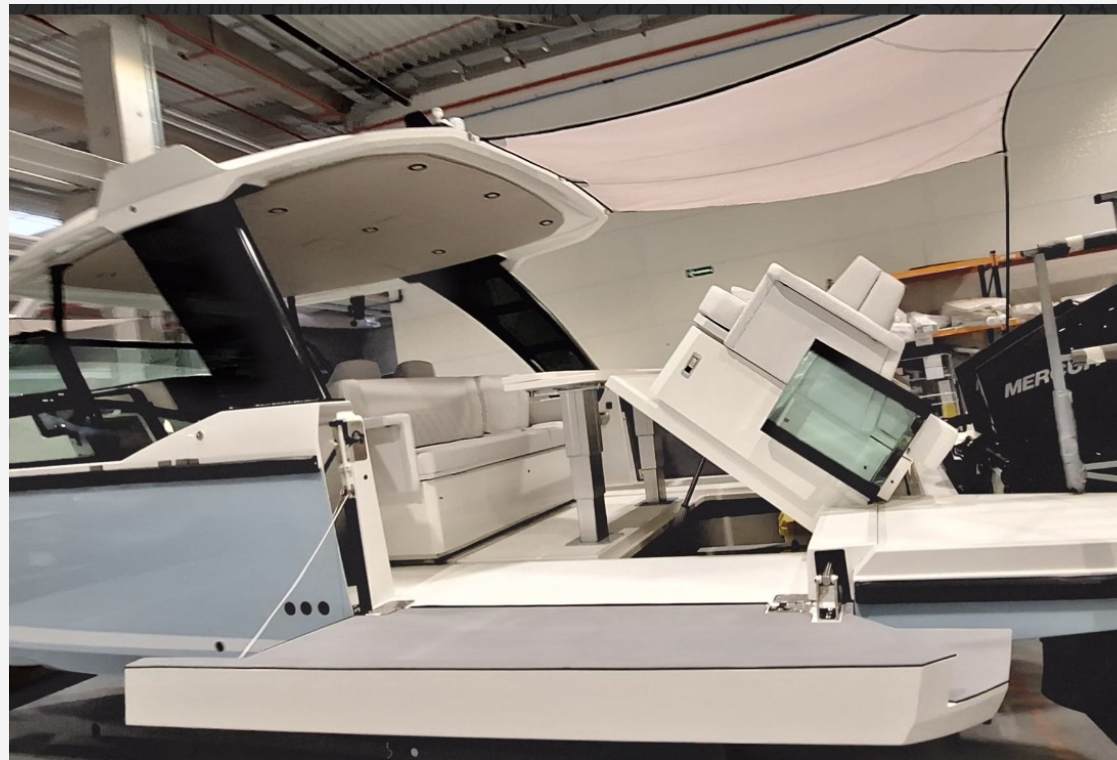
WIRELESS CHARGING AND 12V OUTLETS

Standard



ELECTRICALLY OPERATED TECHNICAL HATCH

Standard



3 INDIVIDUAL SEATS AT DRIVER'S ROW

Standard



CONSOLE AND SEAT COVER

Standard



COMFORT AND READING LIGHTS

Standard



FRONT CABIN COMFORT MATTRESSES

Standard



CARPETS IN FRONT CABIN

Standard



SAXDOR 320GTO WITH ENGINES: 2 X MERCURY V6 CMS 200 BLACK

SX320GTO-E-002



SAXDOR 320GTO WITH ENGINES: 2 X MERCURY V6 CMS 225 BLACK

SX320GTO-E-003



SAXDOR 320GTO WITH ENGINES: 2 X MERCURY V8 AMS 300 BLACK

SX320GTO-E-004



SAXDOR 320GTO WITH ENGINES: JOYSTICK CONTROL(JPO) AVAILABLE ONLY WITH V8 ENGINES

SX320GTO-T-001



SAXDOR 320GTO WITH ENGINES: WHITE TWIN ENGINE AVAILABLE WITH ALL ENGINE OPTIONS

SX320GTO-E-006



SAXDOR 320GTO WITH ENGINES: ADVANCED JPO PACKAGE

SX320GTO-P-010

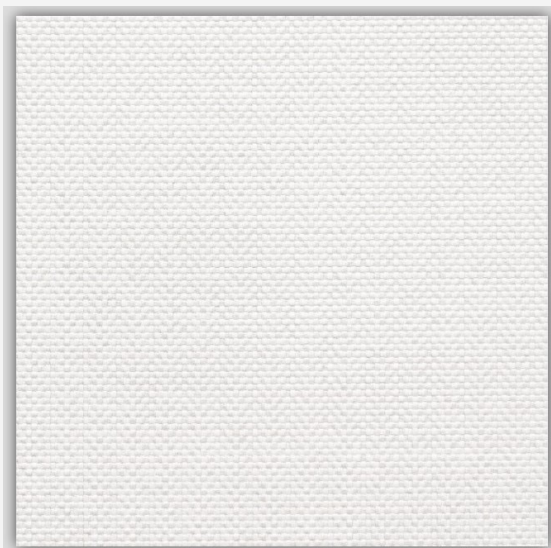
(requires 2x V8 and JPO option)

Proportional bow thruster integrated with
Mercury JPO (cannot be combined with
Bow thruster)



UPHOLSTERY COLORS: MARBLE

Standard

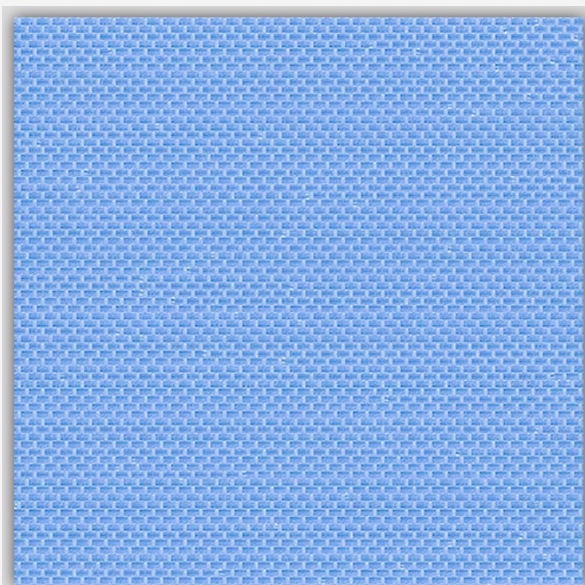


MARBLE



UPHOLSTERY COLORS: FLORIDA BLUE

SX320GTO-C-007

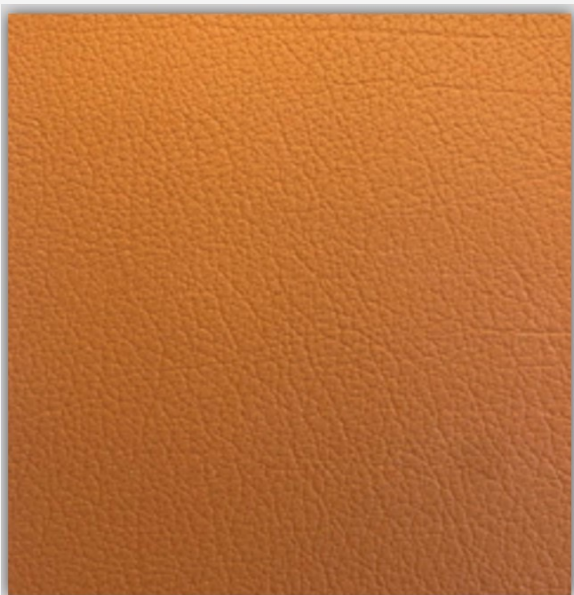


FLORIDA BLUE



UPHOLSTERY COLORS: COGNAC SHOT

SX320GTO-C-008

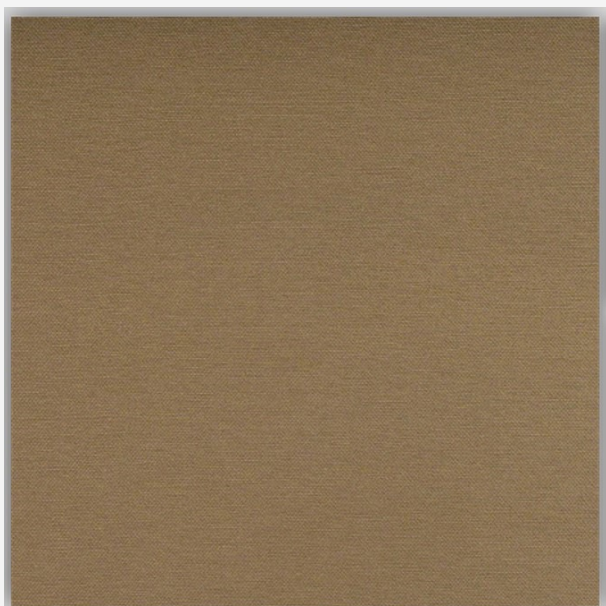


COGNAC SHOT



UPHOLSTERY COLORS: NOUGAT

SX320GTO-C-009

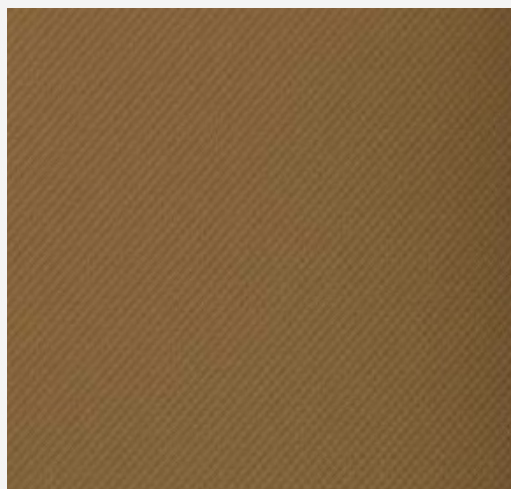


NOUGAT



UPHOLSTERY COLORS: HONEY

SX320GTO-C-011



GELCOAT HULL COLORS: WHITE

Standard



**GELCOAT HULL
COLORS:
STORM GREY**

SX320GTO-C-005



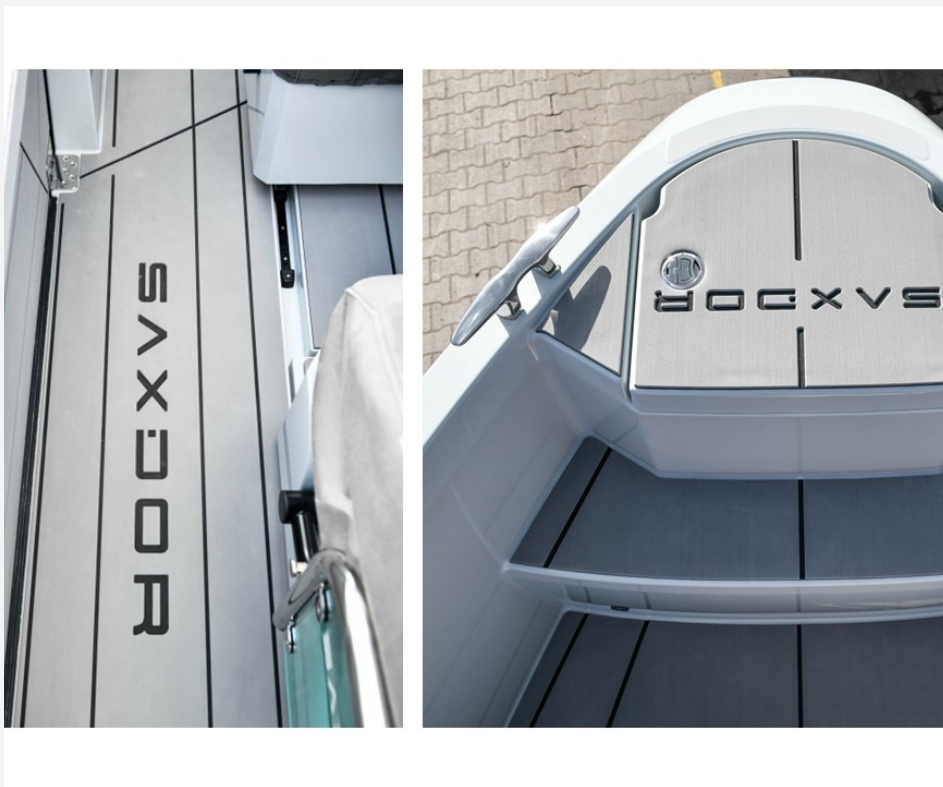
**GELCOAT HULL
COLORS:
FLORIDA BLUE**

SX320GTO-C-010



DECK MATERIAL: SOFT DECK

SX320GTO-O-005



DECK MATERIAL: FLEXITEEK

SX320GTO-O-019



NAVIGATION PACKAGES: NAVIGATION PACKAGE

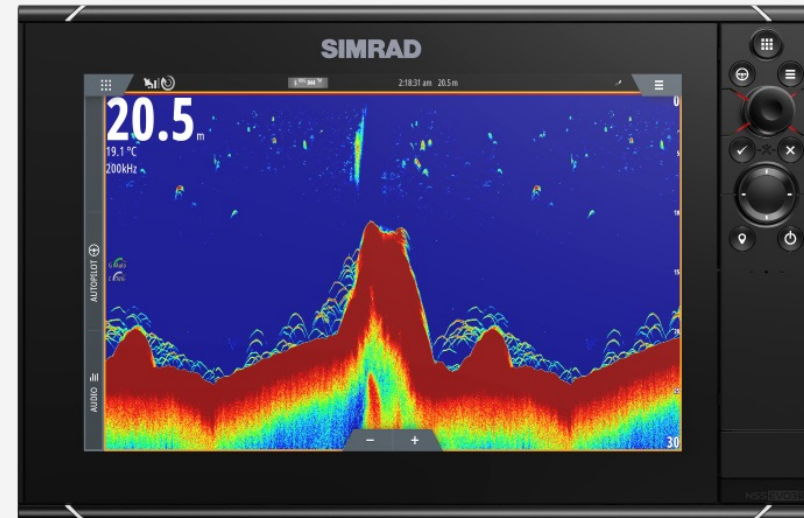
SX320GTO-P-012

1 x Simrad NSS12 Evo3S

Simrad Echosounder P79

Saxdor User interface with system
monitoring

Mercury integration



NAVIGATION PACKAGES: ADVANCED NAVIGATION PACKAGE

SX320GTO-P-013

(Not GT only for GTO)

2 x Simrad NSS12 Evo3S

Simrad RS100-B VHF and Class-B AIS w.
splitter

Simrad Echosounder P79

Saxdor User interface with system
monitoring

Mercury integration



TOILET AND FRESH WATER PACKAGE UPGRADE

SX320GTO-P-014

Fresh water system

Electric toilet

Black water tank

Macerator

Deck and bathroom handheld
bidet shower

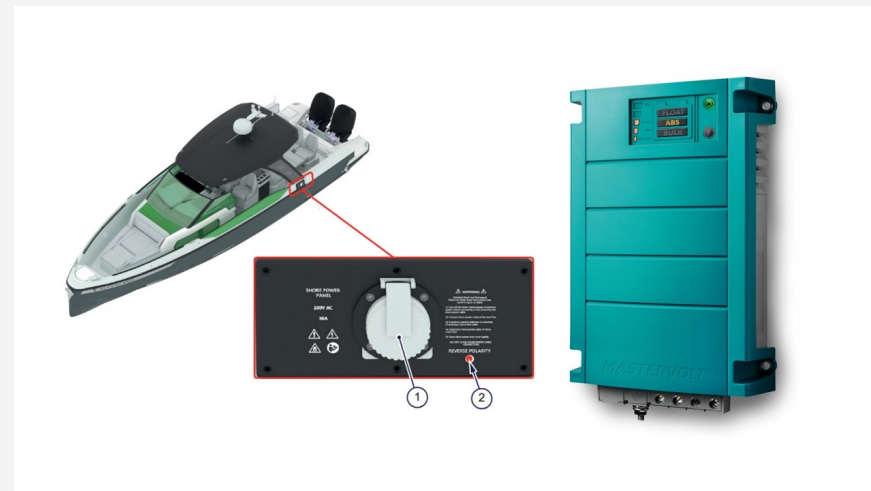


SHORE POWER SYSTEM EU 230V

SX320GTO-T-021

- Mastervolt charger 35 amp
- Shore power system with intake, galvanic isolator and fuse-box
- Shore power cable 15 meter (16amp)
- Electric panel for AC and DC in cabin
- Wall sockets

*Navigation package is needed for battery and shore power reading and system control



HOT CLIMATE PACKAGE 230V EU 6KWH

SX320GTO-P-015

- Air conditioning in sleeping cabin
- Generator replacement system (including Mastervolt 6kWh Lithium battery)
- Mastervolt CombiMaster 230 volt – 2.6 kW. 24 volt – 60 amp

(Cannot be combined with cold climate package – Shore power package needs to be selected)



ADDITIONAL 6KWH LITHIUM BATTERY

SX320GTO-T-003

(available only with hot climate package)



COLD CLIMATE PACKAGE

SX320GTO-P-016

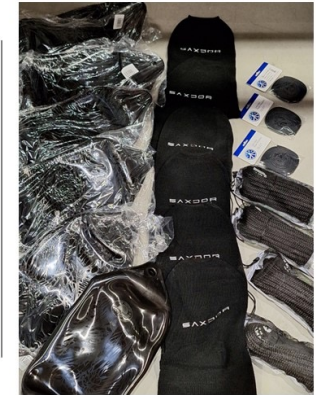
- Diesel air heater (2kW) for sleeping cabin
 - Diesel tank (25L) with deck fill
- (cannot be combined with Hot climate package – shore power package needs to be selected)



SAXDOR LIFESTYLE AND MOORING PACKAGE

SX320GTO-P-009

- 6 x fenders (black) + 6 x fender covers (black) + 6 x fender lines (6mm/1,5m)
- 4 x mooring lines (14mm/6m)
- Anchor + anchor line (14mm/40m)
- Mattress topper for front cabin and ergonomic mattress base
- Saxdor life jackets (4pcs)
- Saxdor weekend bag



TECHNOLOGY: ZIPWAKE INTERCEPTORS SYSTEM

SX320GTO-T-023



TECHNOLOGY: ZIPWAKE MINI CONTROLLER

SX320GTO-T-024



TECHNOLOGY: BOW THRUSTER

SX320GTO-T-007



TECHNOLOGY: CATAPULT BOW WINDLASS WITH 40M CHAIN

SX320GTO-T-008

Traditional windlass with chain gypsy (only available with bow thruster option or advanced JPO package)



TECHNOLOGY: SOLAR PANEL CHARGER SYSTEM (ONLY GTO)

SX320GTO-T-009



TECHNOLOGY: KENYON ELECTRIC STOVE 230V

SX320GTO-T-019

(Shore power needs to be selected first –
cannot be combined with Kenyon grill)



TECHNOLOGY: KENYON ELECTRIC GRILL 230V

SX320GTO-O-023

(Shore power needs to be selected first –
cannot be combined with Kenyon stove)



**TECHNOLOGY:
SIMRAD HALO20+
RADAR (ONLY FOR GTO)**

SX320GTO-N-001



TECHNOLOGY: GPS COMPASS (ONLY FOR GTO)

SX320GTO-N-004



TECHNOLOGY: SIMRAD RS100 VHF-B WITH BIDIRECTIONAL AIS

SX320GTO-N-003

*Navigation package needs to be selected
first

(cannot be combined with advanced
navigation package)



AUDIO: BASIC AUDIO PACKAGE

SX320GTO-A-003

- 4 x Clarion CMSP-651RGB-SWG - speakers
- *Navigation package needs to be selected first



AUDIO: ADVANCED AUDIO PACKAGE

SX320GTO-A-004

- 2 x JL Audio O-C1-650-F-Sw speakers
- 4 x JL Audio M3-650x-S-Gm-i – speakers
- JL Audio XDM Marine Amplifier, 8 Channel Full-Range Car and Marine Amplifier (800 W)
- JL Audio M3-10IB-S-Gm-i - subwoofer

*Navigation package needs to be selected first



COMFORT: WATER SKI POLE

SX320GTO-O-001



**COMFORT:
GREY WATER TANK
(50L)**

SX320GTO-O-018

(Available only with fresh water package)

COMFORT: REFRIGERATOR IN WETBAR PORT SIDE 51 LITRES WITH FREEZER BOX

SX320GTO-O-003



COMFORT: REFRIGERATOR IN WETBAR STBD SIDE 51 LITRES. DRINK MODEL - NO FREEZER BOX

SX320GTO-O-022

(Refrigerator in wetbar port side needs to
be selected first)



COMFORT: CURTAINS IN FRONT CABIN AND MOSQUITO NETS

SX320GTO-O-006



COMFORT: FRONT SUNSHADE IN STATIONARY USE

SX320GTO-O-007

(Cannot be combined with carbon version)



COMFORT: FRONT SUNSHADE FOR STATIONARY USE CARBON

SX320GTO-O-017

(Cannot be combined with standard version)



COMFORT: AFT SUNSHADE CARBON (ONLY FOR GTO)

SX320GTO-O-016



COMFORT: CANOPY

SX320GTO-O-008



COMFORT: DECK LIGHTS

SX320GTO-O-010



LAYOUT: FRONT DECK SUNBED INCLUDING COVER

SX320GTO-O-015



LAYOUT: SLIDING 2ND ROW SOFA WITH COVER

SX320GTO-O-020

The new colors and design



LAYOUT: SLIDING SOFA AND AFT SUNPAD WITH GRP (RTM) TABLE & COVERS

SX320GTO-O-021

The new colors and design



LAYOUT: UPGRADE FOR ELECTRICAL TABLE LEGS

SX320GTO-O-025



**BATTERIES:
2 X OPTIMA BT 1000
MCA START BATTERIES
& 1 X MVG GEL 140 AH**

SX320GTO-T-015

Delete the ones that aren't right



BATTERIES: 1 X OPTIMA BT 1000 MCA BATTERY FOR BOW THRUSTER

SX320GTO-T-016

(advanced JPO pack or bow thruster needs
to be selected first)



DIMENSIONS:



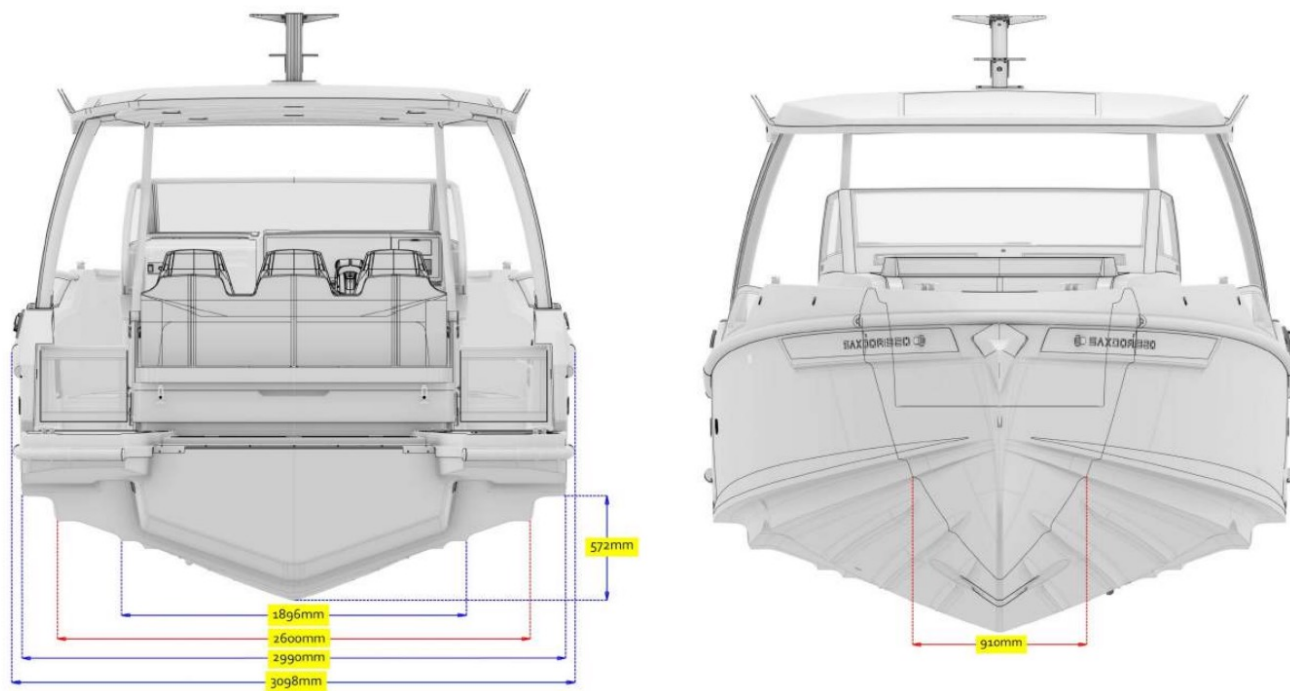
DIMENSIONS:



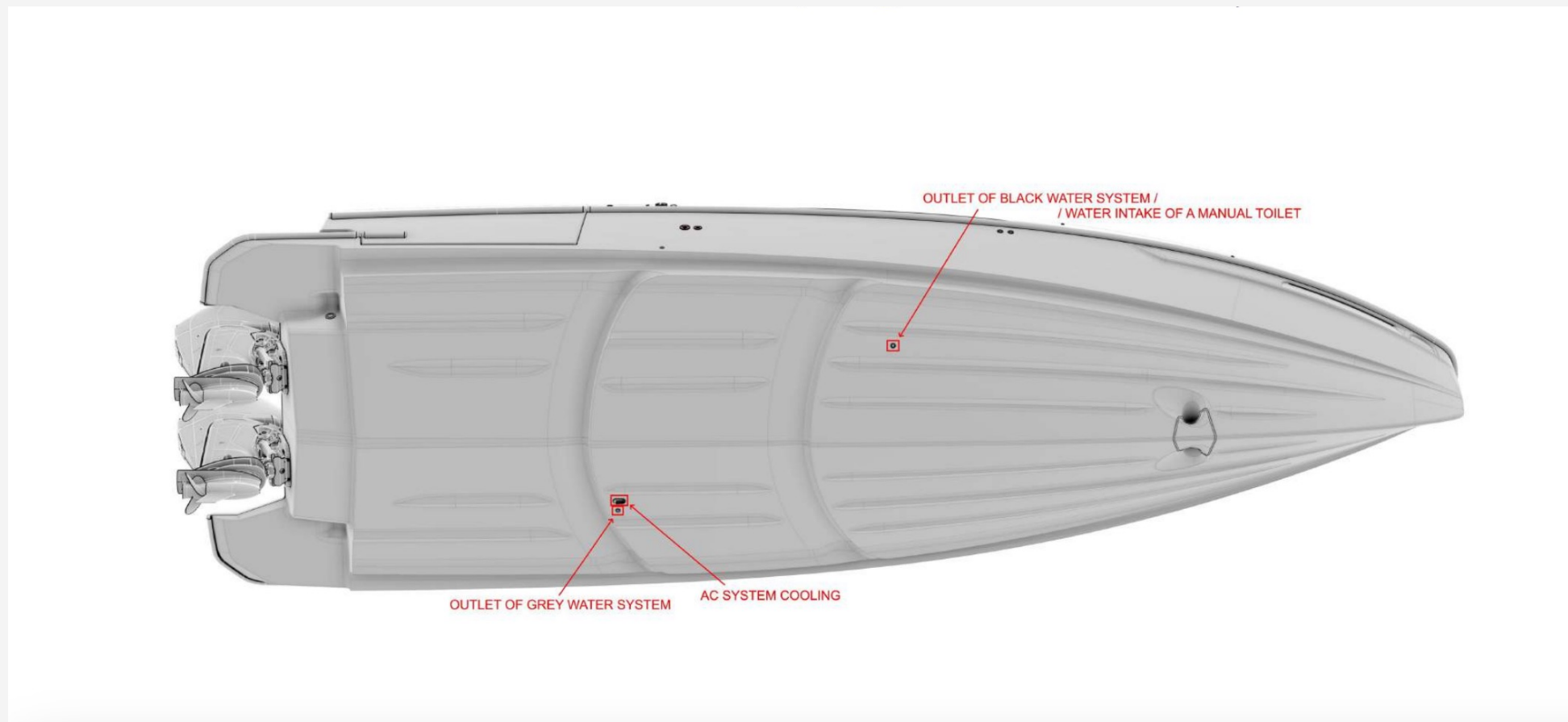
DIMENSIONS:



DIMENSIONS:



DIMENSIONS:



SUMMARY:

- Cruising speed: 28-35 knots
- 400-600 HP
- 6-9 persons (B & C cat.)
- Length: 10.32 metres
- Weight: 4600 kg (depends on engines and options)

